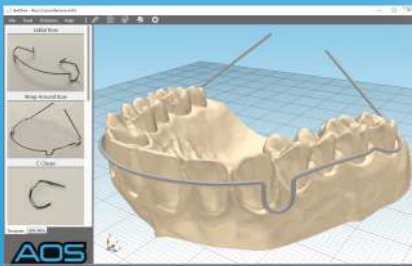


ADVANCED ORTHODONTIC SOLUTIONS



SAAS Cad/Cam JawDraw® for easy design

AOS®

ADVANCED ORTHODONTIC SOLUTIONS



SMALL DIAMETER WIRE BENDING MACHINES

WWW.AOSMICRO.COM

AOS Micro CNC Wire Bending Machines

The micro line of programmable CNC steel wire bending machinery is capable of producing two and three-dimensional wire forms with a wire range of 0.5 to 0.9 mm (0.020 to 0.036 inch).

The material comes from spools which enable lower cycle times and eliminates material waste. The wire is high-quality 304V Stainless steel, and depending on the diameter, each spool provides around 10,000 pieces.

Its small footprint and 120/220VAC power requirement allows the users to setup on an office table and create wire products designed with the use of JawDraw®, a software package that provides flexibility and simplicity in design. JawDraw® allows users to quickly draw a custom appliance by selecting preset forms from its library of templates, it also allows users to make micro adjustments to each wire segment for a perfect custom fit. We also have a range of preforms at disposable ready to be bent instantly.

Advanced technology supported by brushless servo motors and a digital controller allows for high operating speeds with exceptional accuracy and repeatability in the final product.

An Automatic Tool Calibration module is also included for an easy and precise setup for different materials. "Dial-A-Service" allows remote access to any machine worldwide, via Internet, so that diagnostics can be completed within minutes.

Contact AOS for more details at sales@AOSmicro.com

Specifications:

MB1	Metric	SAE
Material Diameter range	0.5 - 0.9 mm	0.020 - 0.036 inch
Material Section range	0.015 - 3.53 mm ²	0.00003 - 0.0055 inch ²
Feeder Resolution	.0002 mm	0.00008 inch
Max Feed Speed	200 mm/sec	7.9 inch/sec
Bender Resolution (deg)	.000007 deg	
Bender Max Speed (deg/sec)	720 Deg/sec	
Z-Axis Resolution (deg)	0.0004 deg	
Z-Axis Max Speed (deg/sec)	4000 deg/sec	
Cut Time	<200 msec	
Operating Temperature	15-40° Celsius (59-104° Fahrenheit)	
Operating Humidity	10-90%	
Operating Voltage	120/220 VAC +10% / -5% 50/60 Hz	
Installed Power	750 Watts (max 6.3A @120VAC)	

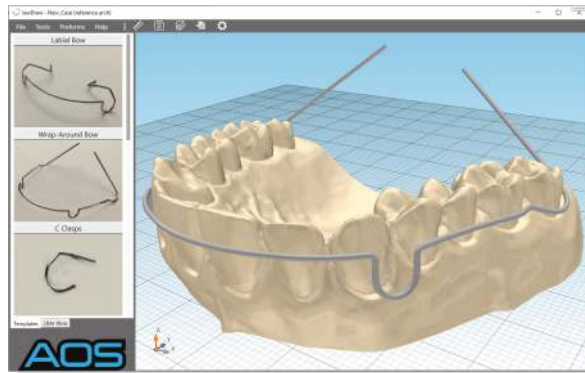


Currently Available Templates:

- Labial bow
- Wraparound bow
- C Clasps
- Support wire
- TPA (Trans-palatal arch)
- Lingual Arc
- RPE (Framework)
- Ball Clasp (without the ball)

Available Preforms:

- Adams clasp
- Arch wires
- C-clasps
- Hook, key
- Labial bow
- Mushroom



SAAS Cad/Cam JawDraw® for easy design



Advanced Orthodontic Solutions ©2021
The Manufacturer Reserves the right to alter any data and/or photos provided in this brochure without notice.

SMALL DIAMETER WIRE BENDING MACHINES

WWW.AOSMICRO.COM



14101 McCormick Drive
Tampa FL 33636, U.S.A.
Phone: +1 813-818-8222
e-mail: sales@aosmicro.com